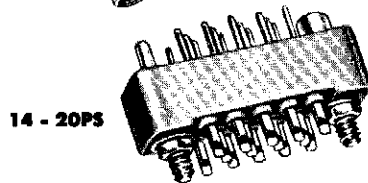
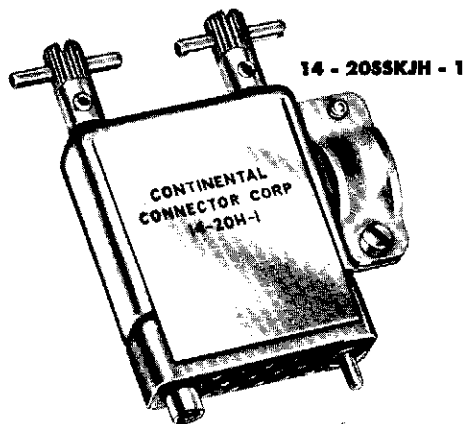


SERIES 20 hood and screwlock assembly

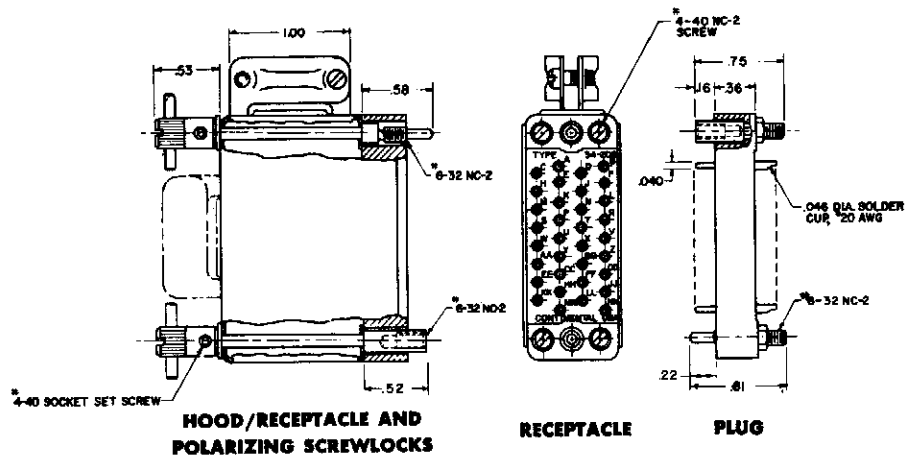


ACTUAL SIZE

When ordering complete connector, add hood and knob symbol designations to part required. For example, 7-20PSKJH-1 is a seven-contact plug with side cable opening hood, screwlocks and "J" type knobs shown on page 23. Add "S" to connector type number for socket panel mounting (7-20SS, socket with screwlock chassis mounted).

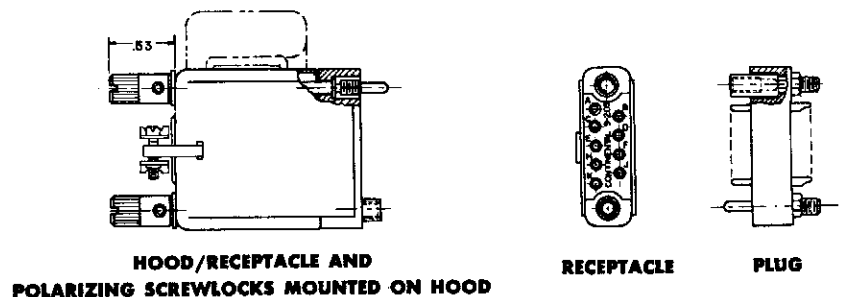
SCREWLOCKS ALSO AVAILABLE
WITH KNOB TYPES
SHOWN ON PAGE 23

FIG. A — HOOD AND SCREWLOCK SEPARATE UNIT



HOOD IS SEPARATE UNIT
ASSEMBLED TO CONNECTOR
WITH #4 - 40 SCREWS SUPPLIED

FIG. B — HOOD AND SCREWLOCK INTEGRAL
WITH CONNECTOR



KNOB MUST BE REMOVED FOR WIRING

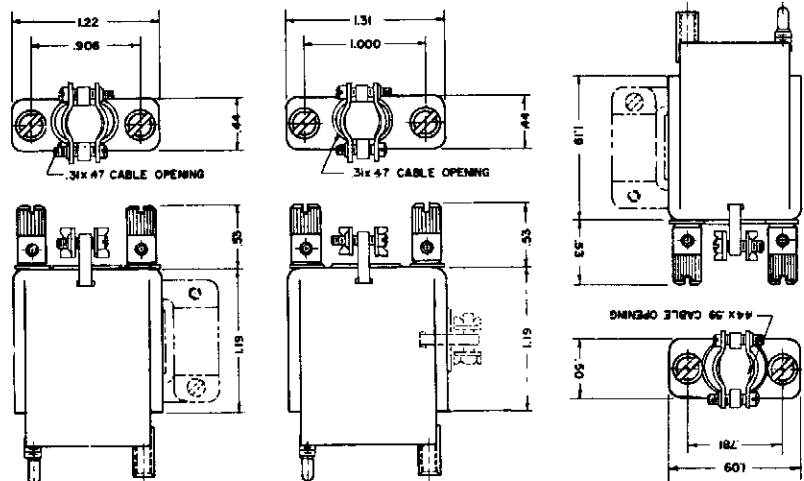
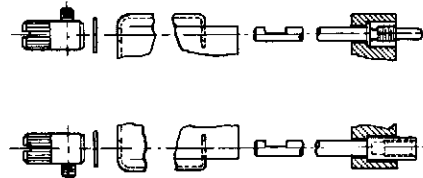


FIG. B
7 - 20KJH
7 - 20KJH - 1

FIG. B
9 - 20KJH
9 - 20KJH - 1

FIG. B
11 - 20KJH
11 - 20KJH - 1